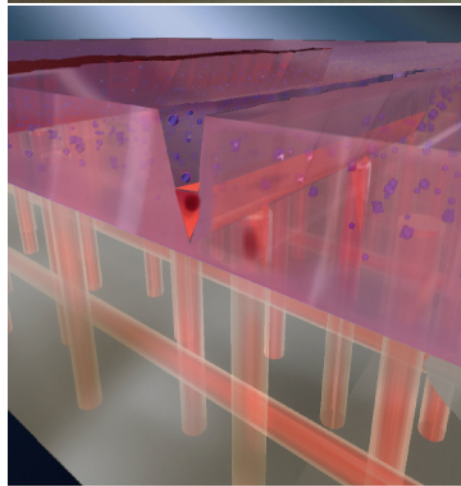
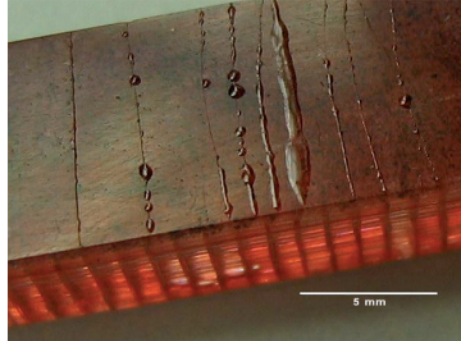


ill. Nano.09.1, ill. Nano.09.2
 Self-healing polymer, by Kathleen Toohey and Nancy Sottos (University of Illinois). Cracks in the plastic coating are sealed by a polymer that emerges, at the site of damage, from a micro-channel system integrated in the substrate.



ill. Light.04.1, ill. Light.04.2, ill. Light.04.3
 GreenPix—Zero Energy Media Wall by Simone Giostra & Partner with Ove Arup. LED media façade with integrated solar panels. The electricity required to operate the LEDs at night is generated by converting sunlight during the day.
 • See Light.04, p. 168



ill. Energy.13.1, ill. Energy.13.2
 Smart Wrap (patent pending) by Kieran Timberlake investigates the idea of an off-the-roll material consisting of OLED (light), PCM (climate) and flexible solar modules (energy), continuously manufactured using combined lamination and printing processes, which combines all the important functions of a building envelope.



ill. Information.15.1
 Touchscreen interface for controlling the building functions of a Smart Home.